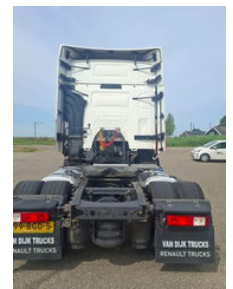


Renault T380 HOLLAND TRUCK

General features

Brand	Renault
Model	T380
Subcategory	Cab over engine
Licence plate	99-BGD-5
Construction year	2015
Date of first registration	01-07-2015
Condition	Used
General condition	Very good
Fuel	Diesel
Emission class	Euro 6



Characteristics

Empty weight	7.761kg
Load capacity	12.739kg
GWV	20.500kg
Length	599cm
Width	253cm
Cylinder contents	10.837cc

Renault T380 HOLLAND TRUCK

Technical specifications

Number of axes	2
Axis configuration	4x2
Transmission	Automatic
Engine output	285kw

Accessories

- Anti-lock braking system
- Air conditioning
- Aluminium fuel tank
- Cruise control
- Twin fuel tank
- Electrically operated windows
- Refrigerator
- Air horn
- Fog lights
-
- Anti-lock braking system
- Electrically adjustable door mirrors
- Spoilers